

# Bedford Outdoor Kitchen

## Basic Steps for Building a Outdoor Kitchen.

Bring your kitchen outdoors with our easy to install Bedford Outdoor Kitchen.



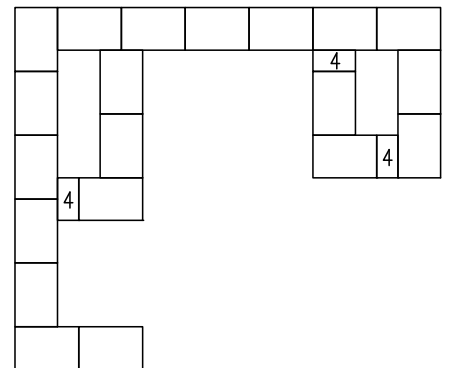
### Step 1: Layout

This project demonstrates how to build on a hard, level surface, such as pavers. Mark out the location by drawing a minimum 5'8" x 6'8" guideline with an opening of 30" where the Grill Station will be placed. If building the grill station with a new patio, it is recommended that the base course be installed on 6" of leveled compacted crushed stone.

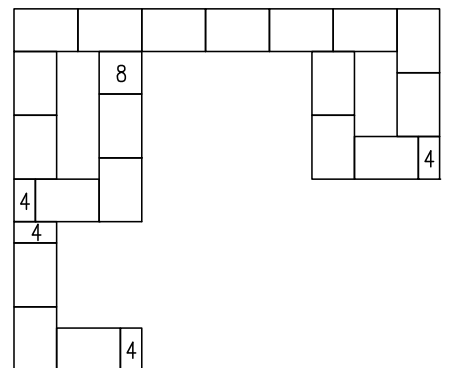
### Step 2: Build

Place the first Bedford Standard unit on the guideline where you want to begin. Continue to place stones using our parameters as your guideline to construct your base course. Use a square tool to line up the blocks to ensure your project is "square". On the second course, place the Bedford Standard units so that they offset the first course. Building a full course at a time will ensure that the blocks line up properly and maintain an offsetting joint for structural stability. Be sure and stagger the blocks. Do not place the blocks directly on top of one another. Reading Rock recommends using a masonry adhesive under courses 2, 4, 6 and 8 to add additional stability to your project. Due to placement of block, actual measurements may vary. Make sure to measure your dimensions before cutting Bedford Standard units.

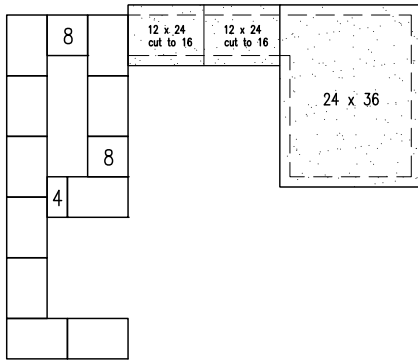
### Courses 1, 3, 5 and 7



### Courses 2, 4, 6 and 8



## Course 9



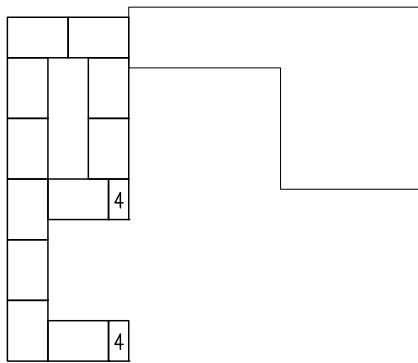
## Step 3: Continue Building

This example uses 10 courses, plus the height of the counter top. Due to placement of block, actual measurements may vary. Make sure to measure your dimensions before cutting Bedford Standard units.

## Step 4: Finish

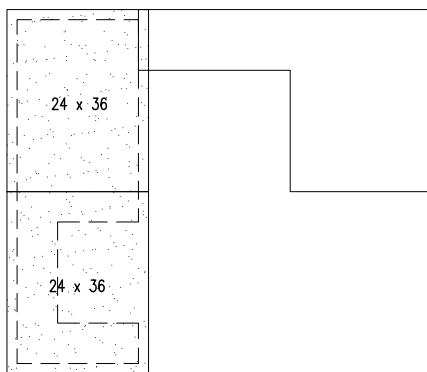
Add course ten to complete your project. Choose a counter top to fit your design. Set your counter tops in place and check for level. Shims may be used if adjustments are necessary. Secure the counter tops in place with the recommended adhesive, then move the grill into place.

## Course 10



*Note: This design is made to fit the 30" W Napoleon Grill (#PT450RBPSS-3). Other drop in grills can be used by altering the design. For additional support, please visit [readingrock.com](http://readingrock.com) or contact Reading Rock customer service at 513.874.2345.*

## Course 11



### Materials needed:

- 185 Bedford Standard units
- 2 Slate Paving Stones 12" x 24"
- 3 Slate Paving Stones 24" x 36"
- 2 Masonry Adhesive 10.5oz.
- **Add 30" W Napoleon Grill (#PT450RBPSS-3)**

### Tools needed:

- Square
- Measuring Tape
- String Line
- Level
- Hammer and Chisel
- Safety Glasses and Work Gloves